

# PLAT OF ORCHARD VILLA SITE

W $\frac{1}{2}$  NE $\frac{1}{4}$  NE $\frac{1}{4}$ ; Lots 1, 2, 3, 4 and W $\frac{1}{2}$  W $\frac{1}{2}$  SE $\frac{1}{4}$  Sec. 9  
W $\frac{1}{2}$  NW $\frac{1}{4}$  NE $\frac{1}{4}$  and Lot 1 Sec. 16

T. 24 N. R. 19 W.  
PRINCIPAL MERIDIAN  
MONTANA

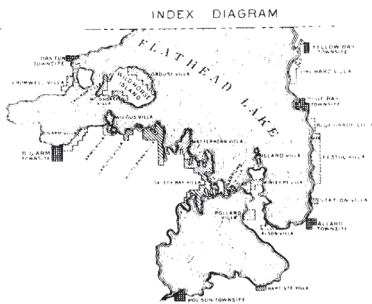
Area 21381 Acres Scale 1 inch = 400 feet

"That all easement in, to and over all lands bordering on or adjacent to Flathead Lake, Montana, which lie below an elevation of nine feet above the high water mark of said lake for the year 1909 is hereby reserved for uses and purposes connected with storage for irrigation development of water power and all patents hereafter issued for any such lands shall recite such reservation." Act approved Aug. 24, 1910 (31 Stat. 527)

Lots whose areas are affected by the contour 9 feet above the high water mark of 1909.

Graphic Computations.

BLOCK NO.	LOT NO.	AFFECTED AREA	UNAFFECTED AREA	TOTAL AREA
3	8	0.02 A.	4.72 A.	4.74 A.
4	1	0.08	4.77	4.85
4	2	0.03	4.87	4.90
4	8	0.01	4.94	4.95
5	4	0.01	4.80	4.81
7	1	0.01	4.71	4.72
8	8	0.02	4.66	4.68



- Legend**
- Iron Posts 1 inch in diameter and 24 inches long, filled with cement, fitted with a bronze cap 2 inches in diameter, marked with Block and Lot numbers in appropriate quadrants, and monument number when appropriate, also with markings as required by Manual of Surveying Instructions when on a legal Subdivision Line. Set 18 inches in ground, when practicable, with mound of stone 18 inches base, 12 inches high around post.
  - Iron Spikes 3/8 inch square 12 inches long, set 10 inches in ground when practicable, with mound of stone 12 inches base, 10 inches high over spike. No markings.
  - Stone set and marked as described in field notes of original sectional survey.
  - Contour 2902.2 feet shown thus and so marked on iron posts set at intersection with surveyed lines.

I hereby certify that this plat of Orchard Villa Site, surveyed by J.P. Walker, U.S. Surveyor, supplemented by H.L. Baldwin, topographer, under my supervision and direction, under instructions from the Commissioner of the General Land Office, dated April 25, 1910, and May 26, 1913, respectively, is strictly conformable to the field notes of the survey thereof.

Washington, D.C.  
March 3, 1914.

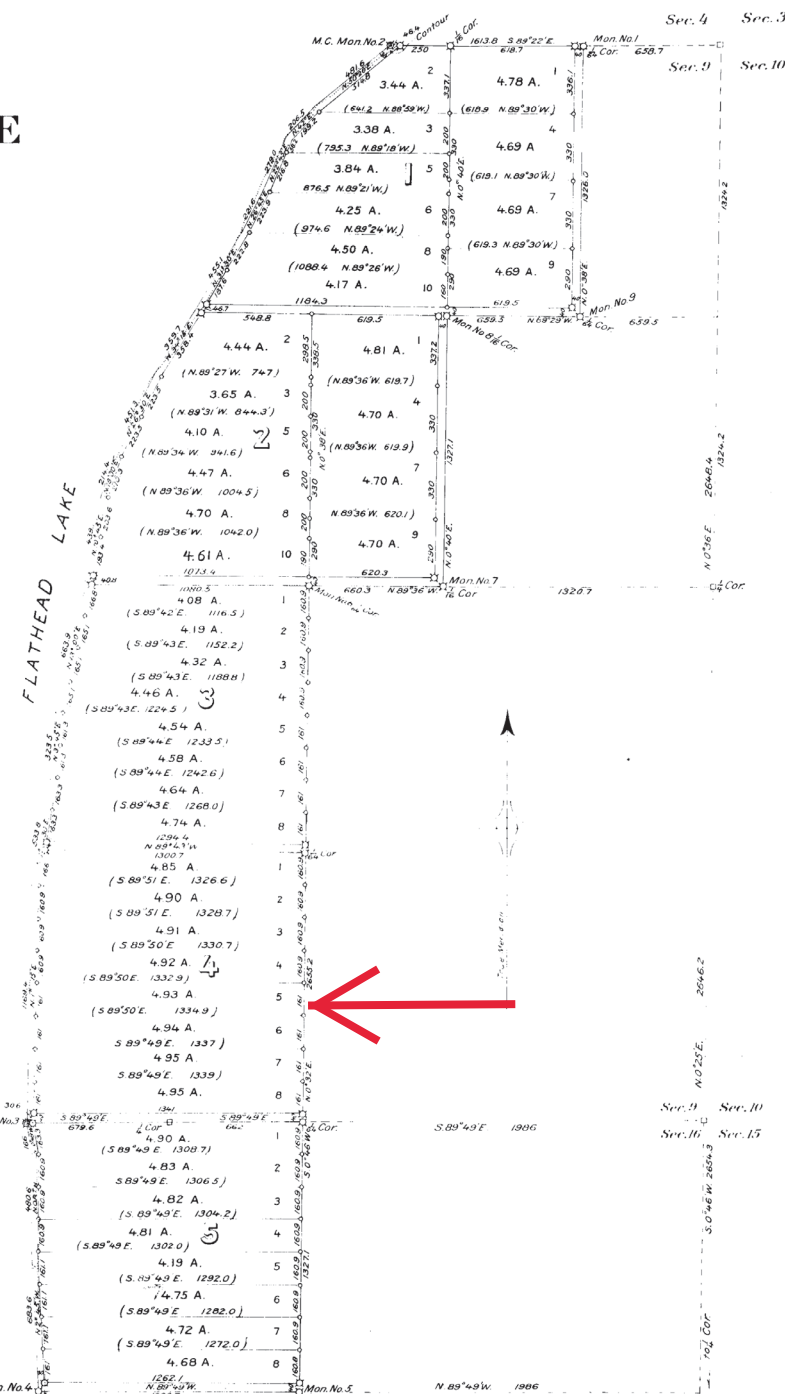
*A.F. Dunnington*  
Topographer  
General Land Office.

DEPARTMENT OF THE INTERIOR  
GENERAL LAND OFFICE  
Washington, D.C. March 3, 1915

I certify that the above plat of Orchard Villa Site, Flathead County, Montana, as surveyed under the supervision and direction of A.F. Dunnington, Topographer, is strictly conformable to the field notes of the survey thereof on file in this office, which have been examined and approved.

*[Signature]*  
Commissioner

Executed in accordance with the provisions of the Act of April 12, 1910, (36 Stats. 296) and August 24, 1912, (37 Stats. 527)



T24 N R 19 W

140  
3242 D

3242 D