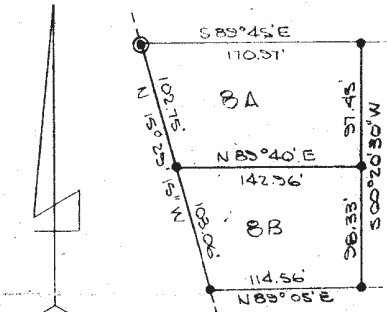


Survey of Lot 8D with illustration of Safety Bay 40' Villa Site Boulevard location along Flathead Lake (not to scale)

H-916

DATE	SYM	REVISION RECORD	AUTH.	DR.	CK.



LOT 8

PORTION OF
SAFETY BAY VILLA SITE BLK 16
LOT 8
SCALE: 1"=100'

Subject Lot 8D

Flathead Lake

LEGEND:

- PINS FOUND (ORIGINAL VILLA SITE SURVEY) 1910.
- PINS FOUND (SPERRY SURVEY)
- PINS SET

NOTE:

BEARINGS AND DISTANCES ARE FROM FIELD MEASUREMENTS AND GEO EQUATIONS WHERE NOTED.

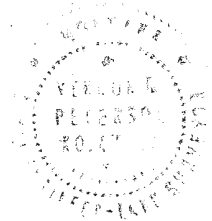
DESCRIPTION TRACT 8D

A STRIP, PIECE OR PARCEL OF LAND SITUATED IN LOT 8 OF SAFETY BAY VILLA SITE, BLOCK 16 AND MORE PARTICULARLY DESCRIBED AS FOLLOWS: BEGINNING AT THE SOUTHEAST CORNER OF LOT 8; THENCE S89°05'W A DISTANCE OF 84.17 FEET; THENCE N1°15'20"E A DISTANCE OF 88.61 THENCE N89°05'E A DISTANCE OF 64.41 FEET; THENCE S11°25'E A DISTANCE OF 90.05 FEET TO THE PLACE OF BEGINNING.

CERTIFICATION

I HEREBY CERTIFY THAT THE ABOVE PLAT AND DESCRIPTION IS A TRUE AND CORRECT REPRESENTATION OF LOT LINES, MONUMENTS AND LAND MARKS AS SHOWN OF A PORTION OF LOT 8, BLOCK 16 OF SAFETY BAY VILLA SITE AND FURTHER THAT THE MONUMENTS AND LAND MARKS AS SHOWN WERE LOCATED ON THE GROUND UNDER MY SUPERVISION IN JULY, 1961.

SS *Vernon R. Peterson*
VERNON R. PETERSON LIC. NO. 477ES
PETERSON ENGINEERING COMPANY
245 WEST MAIN, MISSOULA, MONTANA



TOLERANCES (EXCEPT AS NOTED)	PETERSON ENGINEERING CO. MISSOULA, MONTANA		
DECIMAL	PREPARED FOR JAMES ROTHER	SCALE 1"=100'	DRAWN BY R.A.A.
±			APPROVED BY V.R.P.
FRACTIONAL	TITLE DEED EXHIBIT SAFETY BAY VILLA SITE		
±	DATE 7/10/61	DRAWING NUMBER	8D
ANGULAR		PROJECT NO. 1636	
±			