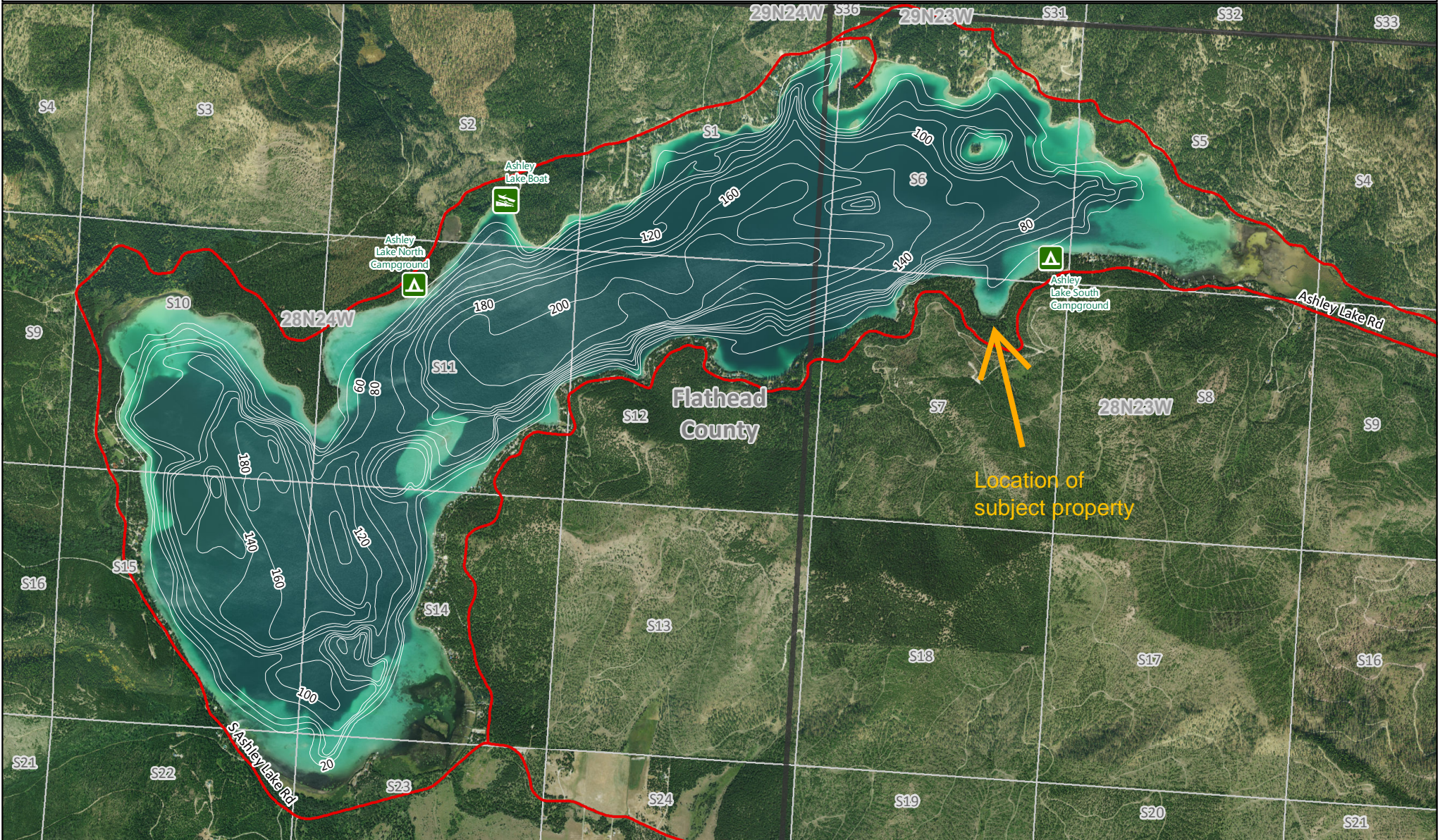


# Ashley Lake

MONTANA FWP

Bathymetry Survey Map



Launch



Camping



Area of Interest



Elevation: 3998 Feet  
 Area: 2850 Acres  
 Max Depth: 225 Feet  
 Volume: 253626 Acre-Feet  
 Ave Depth: 89 Feet

Map Produced by: Geographic Data Services Section Date: 06/27/2018 Lake levels may change. This map is not suitable for navigation. Lake Mapped on 2011-07-18

Administrative boundaries and FWP Lands data from Montana Fish, Wildlife & Parks, Helena, MT. Other data from Montana State Library, Helena, MT. Background Imagery from USDA Aerial Photography Field Office, 2015

0 0.325 0.65  
 Miles