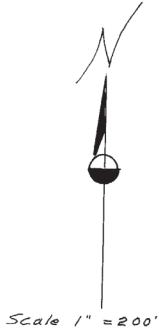


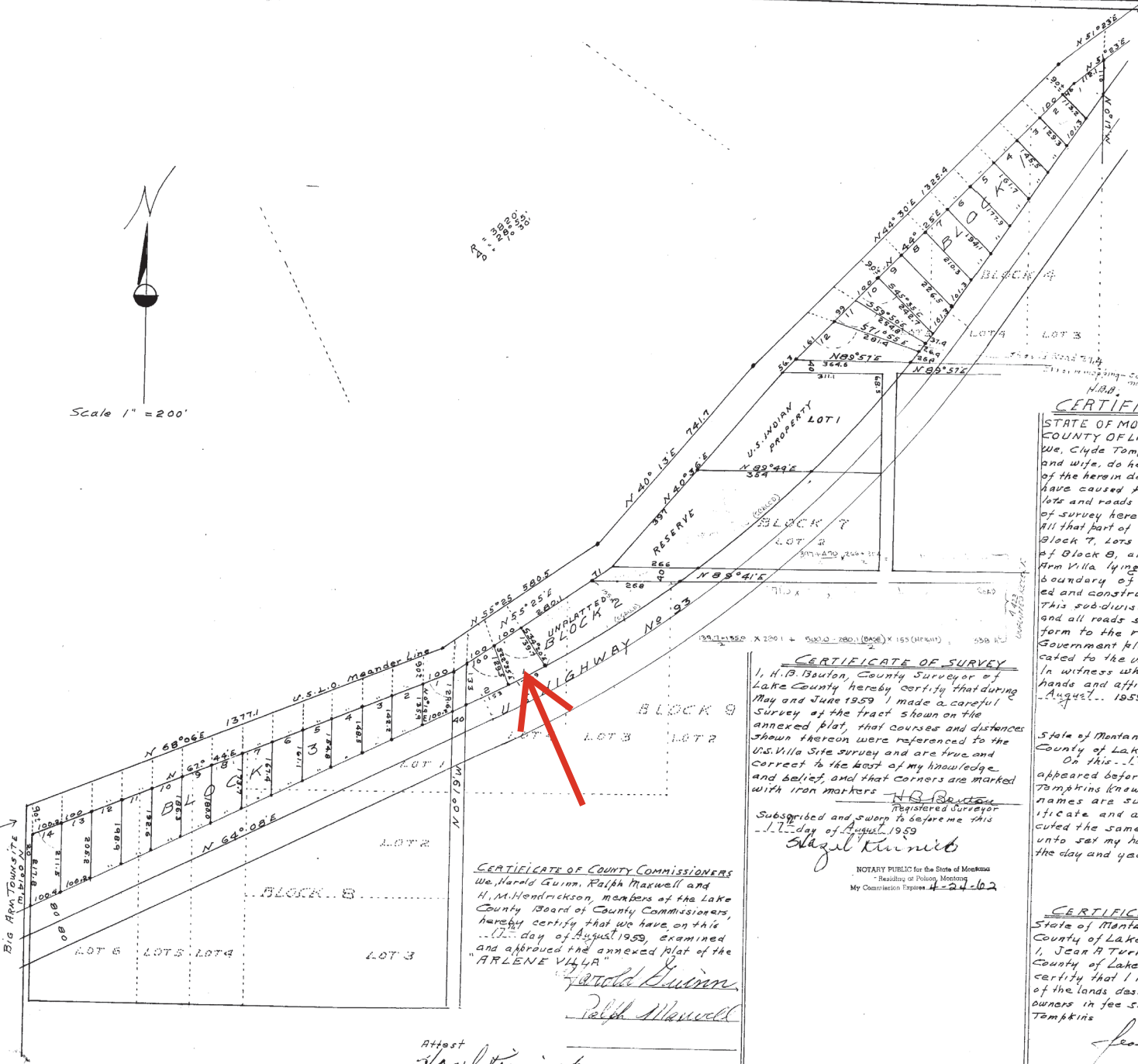
abstract  
Q 3109

STATE OF MONTANA  
County of Lake  
Filed on the 17<sup>th</sup> day of Aug  
A. D. 1959 at 2:04 o'clock P. M.  
**HAZEL KINNICK**  
County Clerk and Recorder  
By Hazel Kinnick  
14<sup>th</sup> Deputy



Scale 1" = 200'

11-501-557



**CERTIFICATE OF DEDICATION**

STATE OF MONTANA } ss  
COUNTY OF LAKE }  
We, Clyde Tompkins and Arlene Tompkins, husband and wife, do hereby certify that we are the owners of the herein described tracts of land and that we have caused them to be surveyed and platted into lots and roads as shown by the plat and certificate of survey hereto annexed to wit: -  
All that part of Lots 3, 4 and 5 of Block 4, Lot 2 of Block 7, Lots 3 and 4 of Block 9, Lots 1, 2, 4, 5 and 6 of Block 8, all of the original Government Big-Arm Villa lying north of the northerly right-of-way boundary of U.S. Highway Number 93 as established and constructed in May 1959. This subdivision to be known as "THE ARLENE VILLA" and all roads shown on the annexed plat conform to the roads dedicated on the original Government plat of Big-Arm Villa and remain dedicated to the use of the public forever.  
In witness whereof we have hereunto set our hands and affixed our seals on this 17<sup>th</sup> day of August, 1959  
Clyde Tompkins  
Arlene Tompkins

**CERTIFICATE OF SURVEY**

I, H. B. Bouton, County Surveyor of Lake County hereby certify that during May and June 1959 I made a careful survey of the tract shown on the annexed plat, that courses and distances shown thereon were referenced to the U.S. Villa Site survey and are true and correct to the best of my knowledge and belief, and that corners are marked with iron markers  
Subscribed and sworn to before me this 17<sup>th</sup> day of August, 1959  
H. B. Bouton  
Registered Surveyor  
Hazel Kinnick

**CERTIFICATE OF COUNTY COMMISSIONERS**

We, Harold Guinn, Ralph Maxwell and H. M. Hendrickson, members of the Lake County Board of County Commissioners, hereby certify that we have, on this 17<sup>th</sup> day of August, 1959, examined and approved the annexed plat of the "ARLENE VILLA"  
Harold Guinn  
Ralph Maxwell

Attest  
Hazel Kinnick  
Clerk and Recorder

NOTARY PUBLIC for the State of Montana  
Residing at Polson, Montana  
My Commission Expires 4-24-62

**CERTIFICATE OF COUNTY ATTORNEY**

STATE OF MONTANA } ss  
COUNTY OF LAKE }  
I, Jean A. Turnage, County Attorney for the County of Lake, State of Montana, hereby certify that I have examined the Abstract of Title of the lands described herein and find that the owners in fee simple are Clyde Tompkins and Arlene Tompkins  
Jean A. Turnage